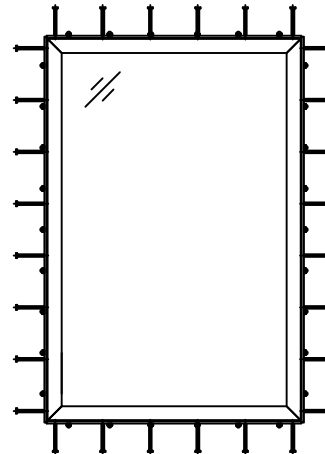
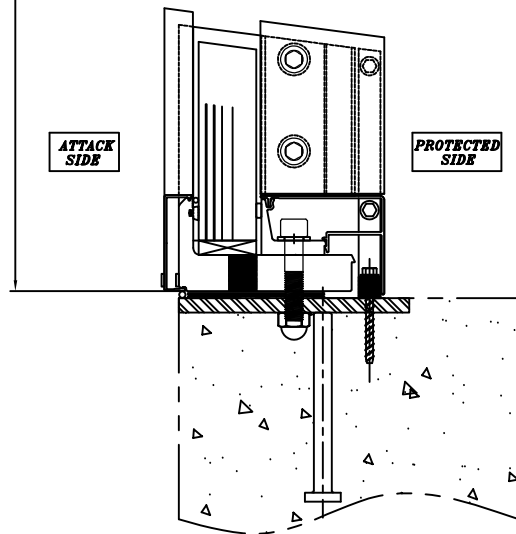
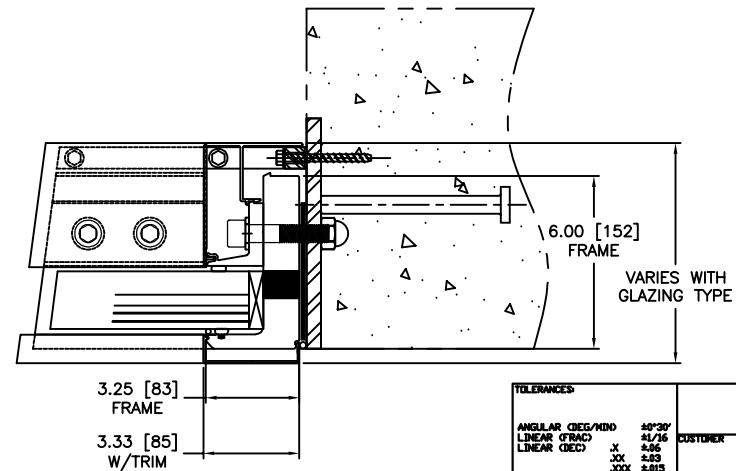


F.F.



- NOTES:
- SEALANT NOT SHOWN. CONSULT HARDEN FOR SEALANT PROCEDURES.
 - FRAME BOLT SIZE AND SPACING AS PER CERTIFIED DESIGN.
 - PLATE SUBFRAME SHOWN, TUBE SUBFRAMES AND OTHER MOUNTING OPTIONS AVAILABLE.
 - STANDARD INTERIOR AND EXTERIOR TRIM SHOWN, OTHER OPTIONS AVAILABLE.
 - GLAZING SIZES ARE FOR REFERENCE ONLY AND MAY NOT BE REPRESENTATIVE OF FINISHED PRODUCT

| GLAZING OPTIONS | | |
|-----------------|------------------|--|
| MODEL | BALLISTIC RATING | TYPICAL GLAZING WIDTH (GW) UNINSULATED |
| WAFV-N-BU5 | UL 752 LEVEL 5 | 1.24" |
| WAFV-N-BU8 | UL 752 LEVEL 8 | 2.35" |
| WAFV-N-BN3 | NIJ III | 1.34" |
| WAFV-N-B39 | 7.62 X 39 | VARIES |
| WAFV-N-EX | N/A - BLAST ONLY | VARIES |



A.F.F. = ABOVE FINISHED FLOOR
 C.O. = CLEAR OPENING
 CUST. = CUSTOMER
 D.O. = DOOR OPENING
 EXT. = EXTERIOR
 F.F. = FINISHED FRAME
 INT. = INTERIOR
 LOC. = LOCATION
 No. = NUMBER
 P.O. = PURCHASE ORDER
 QTY. = QUANTITY
 R.O. = ROUGH OPENING
 V.O. = VISION OPENING
 W.O. = WORK ORDER

| | | | |
|-------------------|-----------------------|---|----------|
| TOLERANCES | | HARDEN ARCHITECTURAL SECURITY PRODUCTS LLC. LANCASTER, PA 17601 | |
| ANGULAR (DEG/100) | ±0°30' | CUSTOMER | TITLE |
| LINEAR (FRAC) | 1/16 | | |
| LINEAR (DEC) | .X XXX XXX | | |
| | .006 0.03 0.015 | | |
| | | | |
| DRAWN BY: | DATE: | WAFV-N BLAST-BALLISTIC ALUM. WINDOW CAD DETAILS | |
| CHECKED BY: | DATE: | SIZE | DWG. NO. |
| ENGINEERED BY: | DATE: | SCALE | DWG. NO. |
| | | | SHEET |